

PISTON DIFFERENTIAL PRESSURE GAUGE SSKE14-1

APPLICATIONS

- Clean Room Application
- Filtration Application
- Water Application

FEATURES

- Compact Design
- Static Pressure 100 bar
- Switch -Reed switch
- Dry / liquid filled



PISTON DIFFERENTIAL PRESSURE GAUGE, SSKE14-1

DESCRIPTION

General

Accuracy : ± 2 % of full scale -Ascending

Ambient temperature : -40...+65°C [without dampening liquid]
: -20...+65°C [with dampening liquid]

Service temperature : 200°C max.

Static pressure limits : 100bar, Option :200bar

Material of construction

Sensing element : Ceramic Magnet

Case & Ring material : AISI 304 SS

Wetted Parts : **Piston** : AISI 316 SS, **Spring** : AISI 302 SS

Chamber : AISI 316 SS

Fastener : AISI 304 SS

Dial : Aluminum, black graduation on white background

Pointer : Fixed Type, aluminum, black powder coated

Gaskets & filling plug : Neoprene

Window : Sheet Glass

Standard version

Dial size : DN63 / DN100 / DN150

Range : 0-0 .25bar...0...25bar

Mounting pattern : Bottom /Back /Inline Port

Process connection : 1/4" NPT (F) x 2 Nos.

Ingress protection : IP 65

Execution : Dry / Dry but fillable /Fillable

Filled versions

Glycerin

Accuracy : $\pm 4.0\%$ of full scale

Dampening liquid : Glycerin 99.7%

Switch / Contactversion

Accuracy : $\pm 4.0\%$ of full scale

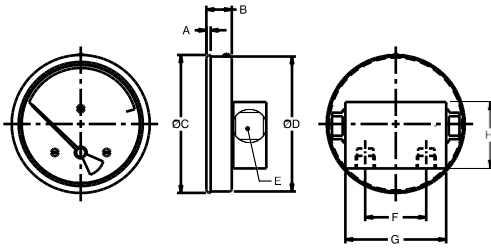
Window : Plexi Glass

Switch : 1 SPDT /1 SPST

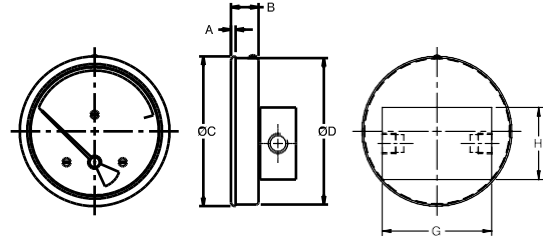
PISTON DIFFERENTIAL PRESSURE GAUGE

SSKE14-1

DIMENSIONAL DRAWING



DN	A	B	C	D	E	F	G	H	Weight (grams)
63	3.2	19.5	66.5	62.5	20	46	76	50	430
100	3.2	19.5	104	101.5	20	46	76	50	460
150	3.2	19.5	155.5	151.5	20	46	76	50	560



DN	A	B	C	D	G	H	Weight (grams)
63	3.2	19.5	66.5	62.5	76	50	410
100	3.2	19.5	104	101.5	76	50	460
150	3.2	19.5	155.5	151.5	76	50	550

NOTES
1. Drawing not to scale. All dimensions are in mm.

ORDERING CODES

MODEL SSKE14-1 Piston Differential Pressure			SSKE14-1		
Gauge DIAL SIZE			D4		
D2	2.5" / 63 mm	D4	4" / 100 mm	D6	6" / 150 mm
MOUNTING			M1		
M1	Direct bottom	M14 - Direct Back	M11	Inline Type	
CONNECTION			P24		
P24	1/4" NPT (F)	P07	1/2" BSP (M)	P08	1/2" NPT (M)
CASE FILLING			F1		
F1	Dry	F2	Dry but fillable	F3	Glycerin filled
WETTED PARTS			S02		
S02	AISI 316 SS	S03	AISI 316L SS		
INGRESS PROTECTION			I1		
I1	IP 65				
RANGE			0-1 bar		
0-1 bar Please mention range required with the measurement unit [SSKE offer in all types of National & International measurement units, e.g. kg/cm ² , psi, kPa, etc. with single or dual scales]					
ELECTRIC CONTACT			XXX		
N13	1 SPDT	N23	1 SPST	N24	2 SPDT
OTHER OPTIONS			XXX		
E16	5 - point calibration certificate	E31	Custom designed dial	E32	Dial tag marking
E17	Material test certificate 3.1	E21	Material test certificate 2.2	E27	SS tag plate, AISI 304 SS

Ordering Example : SSKE14-1.D4.M1.P24.F1.S02.I1/0-1 bar

SHREE SAMARTH KRUPA ENGINEERS

Contact : +91 8155865961, +919586682557

prakash@shree-samarthkrupa.com, www.shree-samarthkrupa.com