

BELLOW TYPE DIFFERENTIAL PRESSURE GAUGE

SSKE13

APPLICATIONS

- Liquid & gaseous mediums
- Corrosive environments
- Oil & Gas applications
- Chemical & Petrochemical
- Food & Beverages
- Nuclear power plants

FEATURES

- All SS measuring system
- External Zero adjustment
- Electric contact version
- Dry / liquid filled



BELLOW TYPE DIFFERENTIAL PRESSURE GAUGE, SSKE13

DESCRIPTION

General

Accuracy : $\pm 2.5\%$ of full scale

Ambient temperature : $-40 \dots +65^\circ\text{C}$ [without dampening liquid]

: $-20 \dots +65^\circ\text{C}$ [with dampening liquid]

Service temperature : 200°C max.

Static pressure limits :

4 bar upto 0.4bar

25 bar upto 2.5bar

40 bar upto 16 bar

Material of construction

Sensing element : Bellow

Case & Ring material : AISI 304 SS (Bayonet type)

Bellow : AISI 316L SS

Chamber : AISI 304 SS

Fastener : AISI 304 SS

Movement mechanism : AISI 304 SS

Dial : Aluminum, black graduation on white background

Pointer : Micro-zero adjustable, aluminum, black powder coated

Gaskets & filling plug : Neoprene

Window : Shatterproof Safety Glass

Standard version

Dial size : DN150

Range : 100 mbar...0...16 bar

Mounting pattern : Direct, Bottom connection

Process connection : 1/2" NPT (F) x 2 Nos.

Ingress protection : IP 65

Execution : Dry / Dry but fillable

Filled versions

Glycerin

Accuracy : $\pm 4.0\%$ of full scale

Dampening liquid : Glycerin 99.7%

Electric Contact version

Accuracy : $\pm 4.0\%$ of full scale

Window : Poly carbonate dome

Switch : 1NO; Make contact

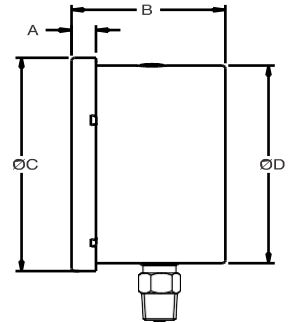
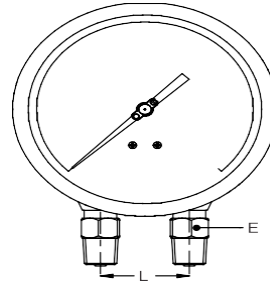
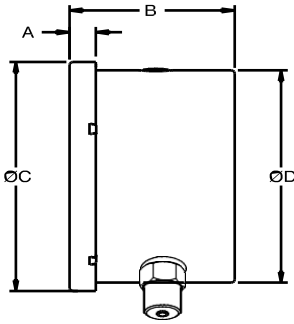
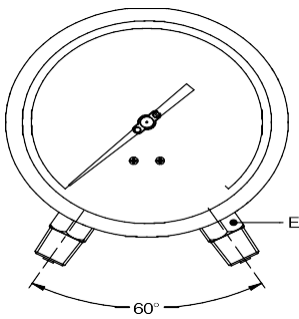
Dampening liquid : Dielectric oil [Optional]

Temperature effect

When temperature of the measuring system deviates from reference temperature ($+20^\circ\text{C}$) :

max error $\pm 0.4\%$ / 10K of true scale value.

BELLOW DIFFERENTIAL PRESSURE GAUGE SSKE13



| DN | A | B | ØC | ØD | E | Weight (grams) |
|-----|----|----|-----|-----|--------|----------------|
| 150 | 15 | 94 | 161 | 149 | A/F-22 | 1840 |

| DN | A | B | ØC | ØD | E | Weight (grams) |
|-----|----|----|-----|-----|--------|----------------|
| 150 | 15 | 94 | 161 | 149 | A/F-22 | 1840 |

NOTES
1. Drawing not to scale. All dimensions are in mm.

ORDERING CODES

| | | | | |
|---------------------------|--|-----------------------------------|-------------------------------------|---------|
| MODEL | SSKE13 Bellow Type Differential Pressure Gauge | | | SSKE13 |
| DIAL SIZE | D6 6" / 150 mm | | | D4 |
| MOUNTING | M1 Direct bottom | M2 Direct bottom with Back flange | M5 Center back with front flange | M1 |
| | M4 Bottom with Yoke/2" Pipe mounting bracket | | | |
| CONNECTION | P07 ½" BSP (M) | P08 ½" NPT (M) | | P08 |
| CASE FILLING | F1 Dry | F2 Dry but fillable | F3 Glycerin filled | F1 |
| | F4 Silicon oil filled | F5 Dielectric oil filled | | |
| WETTED PARTS | S01 AISI 304 SS | S03 AISI 316L SS | | S01 |
| INGRESS PROTECTION | I1 IP 65 | | | I1 |
| RANGE | 0-10 bar Please mention range required with the measurement unit [SSKE offer in all types of National & International measurement units, e.g. kg/cm ² , psi, kPa, etc. with single or dual scales] | | | 0-1 bar |
| ELECTRIC CONTACT | N01 Magnetic contact - 1 NC | N02 Magnetic contact - 1 NO | N03 Magnetic contact - 1 NC / 1 NO | XXX |
| | N04 Magnetic contact - 2 NC | N05 Magnetic contact - 2 NO | N06 Magnetic contact - 1 NO / 1 NC | |
| | N07 Inductive contact - 1 NC | N08 Magnetic contact - 1 NO | N09 Inductive contact - 1 NC / 1 NO | |
| | N10 Inductive contact - 2 NC | N11 Inductive contact - 2 NO | N12 Inductive contact - 1 NO / 1 NC | |
| | N13 1 SPDT | N14 1 DPDT | N15 Booster relay for 5A output | |
| | | | | |
| OTHER OPTIONS | E16 5 - point calibration certificate | E31 Custom designed dial | E32 Dial tag marking | E16/E27 |
| | E17 Material test certificate 3.1 | E21 Material test certificate 2.2 | E28 SS tag plate, AISI 316 SS | |
| | E27 SS tag plate, AISI 304 SS | E33 AISI 316 SS case & ring | | |
| | | | | |

Ordering Example : SSKE13.D4.M1.P08.F1.S01.I1/0-1 bar/E16/E27

SHREE SAMARTH KRUPA ENGINEERS

Contact : +91 8155865961, +919586682557

prakash@shree-samarthkrupa.com, www.shree-samarthkrupa.com

