

SINGLE DIAPHRAGM DIFFERENTIAL PRESSURE GAUGE

SSKE12

APPLICATIONS

- Liquid & gaseous mediums
- Corrosive environments
- Oil & Gas applications
- Chemical & Petrochemical
- Food & Beverages
- Nuclear power plants

FEATURES

- All SS measuring system
- External Zero adjustment
- Electric contact version
- Dry / liquid filled



DIAPHRAGM DIFFERENTIAL PRESSURE GAUGE, SSKE12

DESCRIPTION

General

Design : EN 837-3

Accuracy : $\pm 2.5\%$ of full scale

Ambient temperature : -40...+65°C [without dampening liquid]
: -20...+65°C [with dampening liquid]

Service temperature : 200°C max.

Static pressure limits : 2 bar up to 250 mmWC

6 bar above 250 to 600 mmWC

10 bar above 600 to 6000 mmWC

40 bar above 6000 mmWC to 4 bar

60 bar above 4 bar

Material of construction

Sensing element : Diaphragm

Case & Ring material : AISI 304 SS (Bayonet type)

Diaphragm : AISI 316L SS

Chamber : AISI 304 SS

Fastener : AISI 304 SS

Movement mechanism : AISI 304 SS

Dial : Aluminum, black graduation on white background

Pointer : Micro-zero adjustable, aluminum, black powder coated

Gaskets & filling plug : Neoprene

Window : Shatterproof Safety Glass

Standard version

Dial size : DN100 / DN125 / DN150

Range : 25 mbar...0...25 bar

Mounting pattern : Direct, Bottom connection

Process connection : $\frac{1}{4}$ " NPT (F) x 2 Nos.

Ingress protection : IP 65

Execution : Dry / Dry but fillable

Filled versions

Glycerin

Accuracy : $\pm 4.0\%$ of full scale

Dampening liquid : Glycerin 99.7%

Electric Contact version

Accuracy : $\pm 4.0\%$ of full scale

Window : Poly carbonate dome

Switch : 1NO; Make contact

Dampening liquid : Dielectric oil [Optional]

Temperature effect

When temperature of the measuring system deviates from reference temperature (+20°C) :

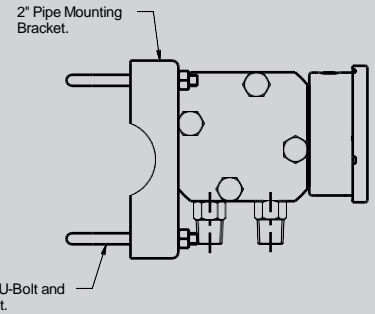
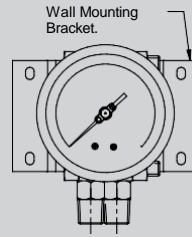
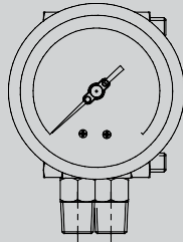
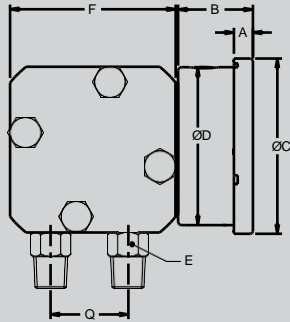
max error $\pm 0.4\%$ / 10K of true scale value.

SINGLE DIAPHRAGM DIFFERENTIAL PRESSURE GAUGE

SSKE12

DIMENSIONAL DRAWING

Direct bottom



NOTES
1. Drawing not to scale. All dimensions are in mm.

DN	A	B	ØC	ØD	E	F	Q
100	12	48	111	100	A/F-22	SQ.105	49
150	15	48	161	149	A/F-22	SQ.105	49

ORDERING CODES

MODEL				SSKE12			
SSKE12 Single Diaphragm Differential Pressure							
Gauge DIAL SIZE							
D4	4" / 100 mm	D6	6" / 150 mm				
MOUNTING				M1			
M1	Direct bottom	M2	Direct bottom with Back flange	M5	Center back with front flange		
M4	Bottom with Yoke/2" Pipe mounting bracket						
CONNECTION				P24			
P24	1/4" NPT (F)	P07	1/2" BSP (M)	P08	1/2" NPT (M)		
P20	M20 x 1.5 mm (M)						
CASE FILLING				F1			
F1	Dry		F2	Dry but fillable		F3	
F4	Silicon oil filled		F5	Dielectric oil filled		Glycerin filled	
WETTED PARTS				S02			
S01	AISI 304 SS		S02	AISI 316 SS		S03	
S05	Monel 500				AISI 316L SS		
INGRESS PROTECTION				I1			
I1	IP 65						
RANGE				0-1 bar			
0-10 bar	Please mention range required with the measurement unit [SSKE offer in all types of National & International measurement units, e.g. kg/cm ² , psi, kPa, etc. with single or dual scales]						
ELECTRIC CONTACT				XXX			
N01	Magnetic contact - 1 NC		N02	Magnetic contact - 1 NO		N03	
N04	Magnetic contact - 2 NC		N05	Magnetic contact - 2 NO		N06	
N07	Inductive contact - 1 NC		N08	Magnetic contact - 1 NO		N09	
N10	Inductive contact - 2 NC		N11	Inductive contact - 2 NO		N12	
N13	1 SPDT		N14	1 DPDT		N15	
					Booster relay for 5A output		
OTHER OPTIONS				E16/E27			
E16	5 - point calibration certificate		E31	Custom designed dial		E32	
E17	Material test certificate 3.1		E21	Material test certificate 2.2		E28	
E27	SS tag plate, AISI 304 SS		E33	AISI 316 SS case & ring		Dial tag marking SS tag plate, AISI 316 SS	

Ordering Example : SSKE12.D4.M1.P24.F1.S02.I1/0-1 bar/E16/E27

SHREE SAMARTH KRUPA ENGINEERS

Contact : +91 8155865961, +919586682557
prakash@shree-samarthkrupa.com, www.shree-samarthkrupa.com