

SANITARY PRESSURE GAUGE

SSKE10

APPLICATIONS

- Sanitary, food & beverages
- Pharmaceutical & paints
- Bacterial & fungal accumulates which contaminates the process

FEATURES

- Integrated gauge seal assembly
- Reduced vibration/pulsation
- Laser welded diaphragm



SANITARY PRESSURE GAUGE, SSKE10

DESCRIPTION

General

Design : EN 837-3

Accuracy : $\pm 1.6\%$ of full scale

Ambient temperature: -40...+65°C [without dampening liquid]
-20...+65°C [with dampening liquid]

Service temperature : 10...150°C max.

Pressure limits : Steady pressure up to FS value

Fluctuating pressure up to 90% of FS value

Short time 1.3 x FS value for range up to 100 bar

Short time 1.15 x FS value for range above 100 bar

Weld joints : TIG argon arc welding

Material of construction

Sensing element : Diaphragm

Case & Ring material : AISI 304 SS (Bayonet type)

Diaphragm, Bourdon tube & Shank : AISI 316L SS

Movement mechanism : AISI 304 SS

Dial : Aluminum, black graduation on white background

Pointer : Fixed, aluminum, black powder coated

Gaskets & filling plug : Neoprene

Window : Plexi glass

Standard version

Dial size : DN50 / DN63 / DN100

Range : -1...40 bar

Mounting pattern : Direct, Bottom connection

Process connection : 1½" Sanitary connection

Seal filling fluid : Glycerine [10°C to 150°C]

Ingress protection : IP 65

Execution : Dry / Dry but fillable

Filled versions

Glycerin

Window : Plexi glass

Dampening liquid : Glycerin 99.7%

Temperature effect

When temperature of the measuring system deviates from reference temperature (+20°C) :

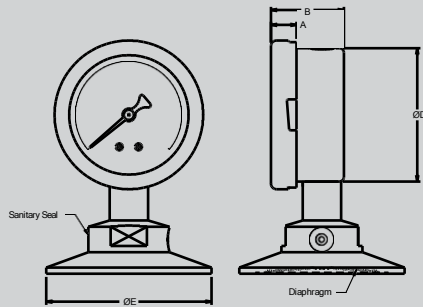
max error $\pm 0.4\%$ / 10K of true scale value.

SANITARY PRESSURE GAUGE

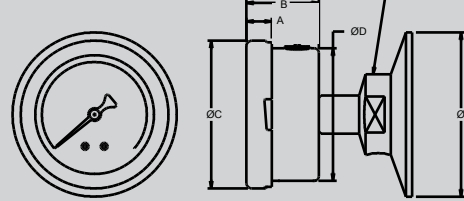
SSKE10

DIMENSIONAL DRAWING

Direct bottom



Center back



DN	Clamp Size	A	B	ØC	ØD	ØE
50	1½"	9	34	58.5	51	50.5
	2"	9	34	58.5	51	64
	2½"	9	34	58.5	51	77.5
63	1½"	12	33	69.7	62.5	50.5
	2"	12	33	69.7	62.5	64
	2½"	12	33	69.7	62.5	77.5

NOTES
1. Drawing not to scale. All dimensions are in mm.

ORDERING CODES

MODEL	SSKE10 Sanitary Pressure Gauge					SSKE10
DIAL SIZE						D2
D1	2" / 50 mm	D2	2.5" / 63 mm	D4	4" / 100 mm	
MOUNTING						M1
M1	Direct bottom	M5	Direct center back			
CONNECTION						P42
P41	1" Tri-clamp	P42	1½" Tri-clamp	P43	2" Tri-clamp	
P44	2½" Tri-clamp					
CASE FILLING						F2
F1	Dry	F2	Dry but fillable	F3	Glycerin filled	
WETTED PARTS						S02
S02	AISI 316 SS	S03	AISI 316L SS			
INGRESS PROTECTION						I1
I1	IP 65	I3	IP 67			
RANGE						0-10 bar
0-10 bar	Please mention range required with the measurement unit [SSKE offer in all types of National & International measurement units, e.g. kg/cm ² , psi, kPa, etc. with single or dual scales]					
OTHER OPTIONS						E16/E27
E16	5 - point calibration certificate	E31	Custom designed dial	E32	Dial tag marking	
E17	Material test certificate 3.1	E21	Material test certificate 2.2	E28	SS tag plate, AISI 316 SS	
E27	SS tag plate, AISI 304 SS	E47	Crimped case & ring			

* Suitable Gasket & Clamp assemblies are available. Please contact ITEC.

Ordering Example : SSKE10.D2.M1.P42.F2.S02.I1/0-10 bar/E16/E27

SHREE SAMARTH KRUPA ENGINEERS

Contact : +91 8155865961, +919586682557

prakash@shree-samarthkrupa.com, www.shree-samarthkrupa.com

