

CABLE FLOAT LEVEL SWITCH

SSKE42-2

APPLICATIONS

- OEM Applications
- Hydraulic / Pneumatic systems
- Water & Non-corrosive
- Pump control & protection

FEATURES

- Economical Version
- Rigid & Easy Installation
- Adjustable Counter Weight



Cable Float Level Switch, SSKE42-2

DESCRIPTION

General

Type : Cable Float Level switch
Max Operating Pressure : 4 bar
Max Operating Temperature : 60°C
Orientation : Top Mounting
Process connection type : Flanged /Threaded

Material of construction

Process Connection : AISI 304 SS / AISI 316 SS
Float & Counter weight material : Polypropylene
Cable material : PVC

Standard version : Cable Float Level switch

Orientation: TOP MOUNTING

Switching Rating : 16A / 250 VAC

Switching Type: Micro switch, 1 SPDT,

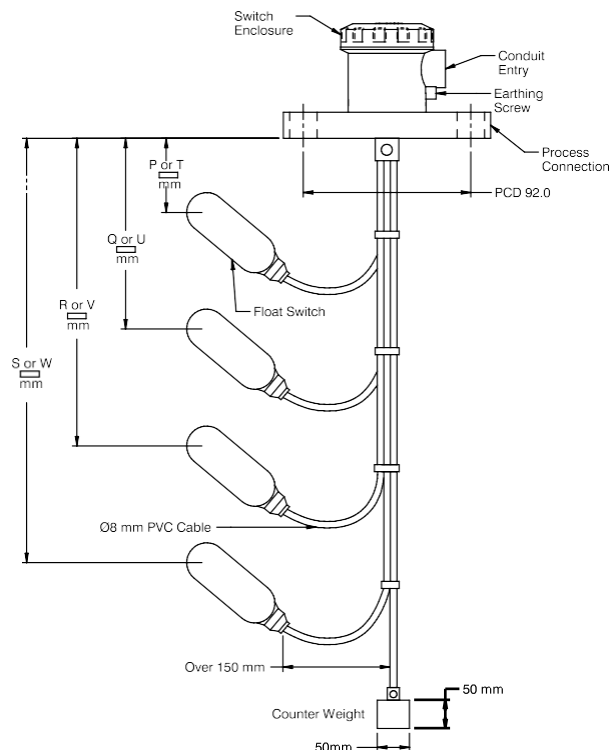
Encloser Protection : IP68

Switching Point : Single / Multi Point

Process connection: Flanged / Threaded

Specific Gravity : 0.8

DIMENSIONAL DRAWING



NOTES

1. Drawing not to scale. All dimensions are in mm.

CABLE FLOAT LEVEL SWITCH

SSKE42-2

MODEL

SSKE Cable Float Level Switch

SSKE

ENCLOSER

WP1 Weather Proof , IP65 **FP1** Flame Proof , IP68

WP1

NUMBER OF SWITCHS

1 ONE SWITCH **2** TWO SWITCH **3** THREE SWITCH **4** FOUR SWITCH

1

PROCESS CONNECTION

FC FLANGE CONNECTION **TC** THREADED CONNECTION

FC

Ordering Example : SSKE.M14.S02.E60/E27/E61

Rev 00

© 2016 SSKE. All rights reserved. The technical details & specifications are provided as such at the time of printing. Technical changes and omissions may happen later.