

LEVEL GAUGES - REFLEX / TRANSPARENT

SSKE40-1 & 2

APPLICATIONS

- Petro-chemical plants
- Process & power plants
- Chemical / Fertilizer plants

FEATURES

- Reflex / Transparent type glass indicator
- High pressure & temperature
- Reflex / Transparent for clear liquid level indication
- Transparent for gaseous fluids



LEVEL GAUGE - REFLEX / TRANSPARENT, SSKE40-1 & 2

DESCRIPTION

General

Design : DIN 7081 / BS 3463

Type : Reflex / Transparent

Max Operating Pressure : 40 bar / 60 bar / 150 bar

Max Operating Temperature : 120°C / 240°C / 400°C

Orientation : Top+Bottom / Side+Side

Process connection type : Threaded / Flanged

Isolation valve : Offset screwed bonnet / Auto ball-check

Visible length : Equal for Side+Side mounting and
lesser by 50 mm in Top+Bottom mounting to CCD

Material of construction

Body material : ASTM A105 / ASTM A350 LF2 / AISI 304 SS
AISI 316 SS / AISI 316L SS

Cover plates : ASTM A105 / ASTM A350 LF2 / AISI 304 SS
AISI 316 SS / AISI 316L SS

Isolation valves : ASTM A105 with AISI 304 SS trim
AISI 304 SS / AISI 316 SS with AISI 316 SS trim

Gaskets : Compressed Asbestos Fiber (CAF) / PTFE
Grafoil reinforced with AISI 316 SS

Nuts & Bolts : Chrome molybdenum alloy steel in combination
as A193 B7 & A194 2H / A193 B8 - A194 8M

Vent & Drain connection & accessories : As per body material

Scale : Aluminum / AISI 304 SS / AISI 316 SS / Acrylic

Tag plate : AISI 304 SS

Standard version : Reflex / Transparent

Orientation : Top+Bottom

Body material : ASTM A105

Cover plates : ASTM A105

Glasses : Borosilicate

Gasket : Compressed Asbestos Fiber (CAF)

Vent : ½" NPT (F), plugged

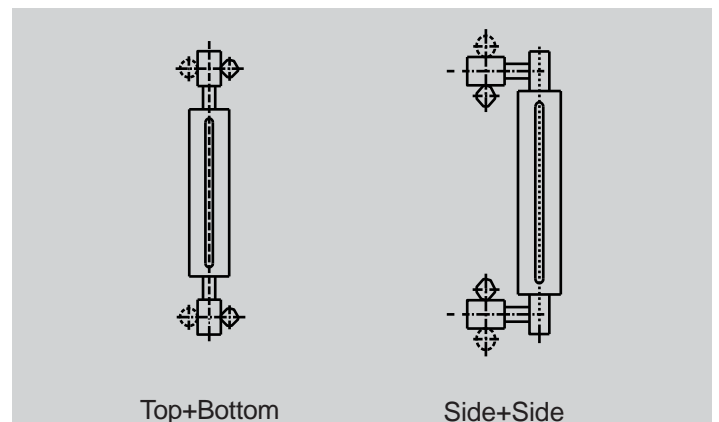
Drain : ½" NPT (F), plugged

Process connection : 1" RF 150# as per ANSI B16.5

Center to Center Distance (CCD) : 300...6500 mm

Scale : Aluminum

ORIENTATION

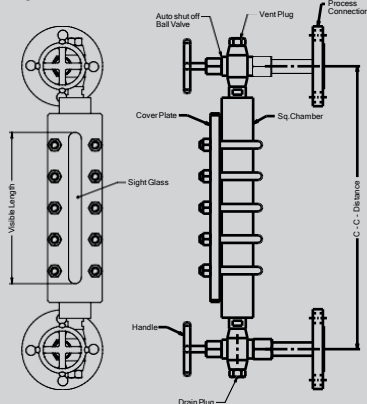


LEVEL GAUGES - REFLEX / TRANSPARENT

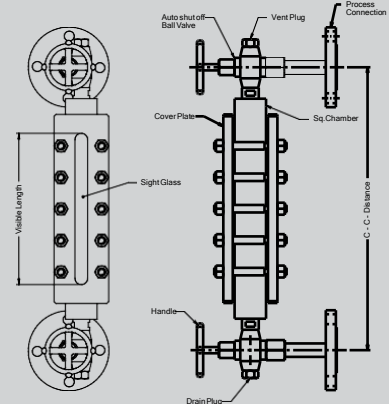
SSKE40-1 & 2

DIMENSIONAL DRAWING

Reflex -SSKE40-1



Transparent-SSKE40-2



NOTES
1. Drawing not to scale. All dimensions are in mm.

ORDERING CODES

MODEL		SSKE40-1 Reflex Level Gauge		SSKE40-2 Transparent Level Gauge		SSKE40-1
ORIENTATION						M14
M14	Top+Bottom	M15	Side+Side			M14
BODY MATERIAL						S09
S09	ASTM A105	S01	AISI 304 SS	S02	AISI 316 SS	S09
S13	ASTM A350 LF2					S09
COVER PLATES						S09
S09	ASTM A105	S01	AISI 304 SS	S02	AISI 316 SS	S09
S13	ASTM A350 LF2					S09
GASKETS						E51
E50	CAF	E51	PTFE	E52	Grafoil reinforced with SS 316	E51
VENT						E53
E53	½" NPT (F), plugged	E54	¾" NPT (F), plugged	E55	1" NPT (F), plugged	E53
E56	Needle Valve	E57	Ball Valve	E58	Flanged	E53
DRAIN						E53
E53	½" NPT (F), plugged	E54	¾" NPT (F), plugged	E55	1" NPT (F), plugged	E53
E56	Needle Valve	E57	Ball Valve	E58	Flanged	E53
PROCESS CONNECTION						A13
P8	½" NPT (M)	A13	1" RF 150#	A31	2" RF 150#	A13
P10	¾" NPT (M)	A14	1" RF 300#	A32	2" RF 300#	A13
P12	1" NPT (M)	A25	1½" RF 150#	A43	3" RF 150#	A13
P16	¾" NPT (M)	A26	1½" RF 300#	A49	4" RF 150#	A13
SCALE						S14
S14	Aluminum	S15	Acrylic	S01	AISI 304 SS	S14
S02	AISI 316 SS					S14
CENTER TO CENTER DISTANCE						500
XXXX	300...6500 mm					500
OTHER OPTIONS						E60/E27/E61
E60	Performance test certificate	E17	Material test certificate 3.1	E27	Tag plate, AISI 304 SS	E60/E27/E61
E28	Tag plate, AISI 316 SS	E58	Anti-frost protection	E59	Illuminator with diffuser	E60/E27/E61
E61	Hydro test certificate					E60/E27/E61

Ordering Example : SSKE40-1.M14.S09.S09.E51.E53.E53.A13.S14/500/E60/E27/E61

SHREE SAMARTH KRUPA ENGINEERS

Contact : +91 8155865961, +919586682557

prakash@shree-samarthkrupa.com, www.shree-samarthkrupa.com